

# Remote Piloted Aircraft Systems

## Airborne Inspections and Audits

High resolution photographs of all site elements are provided for any portion of a modelled 3D representation of an installation.

This allows the customer to “virtually” inspect a rendered model of its installation in the comfort of his office. This service is particularly suited for the determination of installation quality, operational integrity and rental capacity on the mast structures and site. Object dimensions, volumes and spatial positions can also be accurately determined from the model.

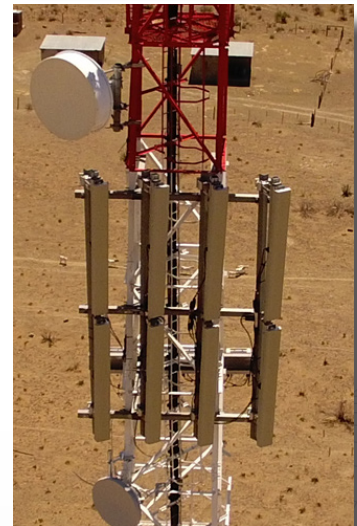
The compilation of detail visualized records is thus available for a range of planning-, operational-, and audit activities.

High resolution thermal inspection per special arrangement (Release date end 2017)

Specialised enclosed cavity/dangerous area inspections per special arrangement. (Coming soon!)

## Outputs

- A scaled 3D model enabling the physical dimensioning/ volumes of objects on and around the site.
- Structural/installation condition
- Mast occupancy (antenna count)
- Site occupancy (buildings, containers structures satellite antennas)
- Inventories
- Site grounds conditions (crush stone, weeds, erosion, etc.)
- Security elements
- Immediate adjoining environment (houses, veld, farm land, etc.)
- Access road, drainage, slopes, volumes, and areas.
- Project progress
- Detailed, geo-referenced aerial imagery as required
- Thermal analyses per agreement



**LS telcom**

LS Multi Copter Projects and Services (Pty) Ltd

[www.LSofSA.co.za](http://www.LSofSA.co.za)