

# Remote Piloted Aircraft Systems

## Airborne Mapping and Surveying

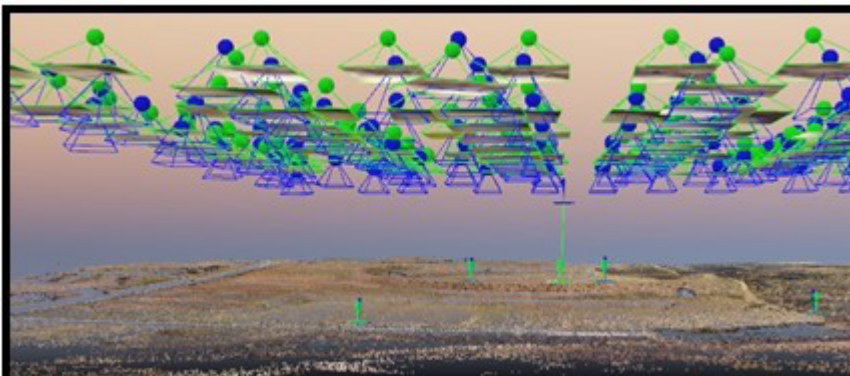
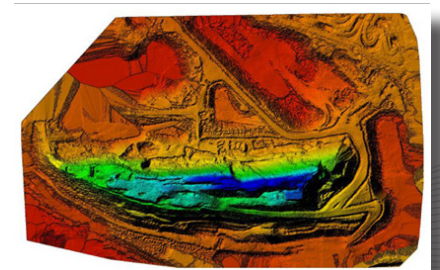
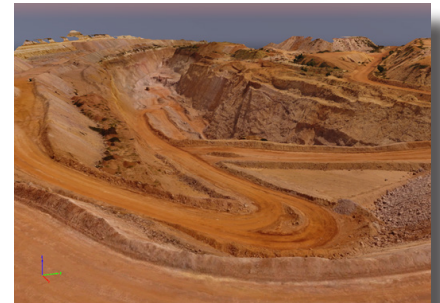
Flight data acquisition for aerial mapping and surveying is done through the recording of high resolution geotagged images for photogrammetric modelling. Accurately placed ground reference points and check point are deployed as required.

This processed data can be applied for the visualization of a wide range of applications or representations in two or three dimensional models/point clouds in various formats and at various resolution levels.

This process can be complimented by various added scanned datasets either ground based or airborne (application dependent)

### Outputs

- 3D terrain models (surveyor resolution if required)
- Ortho maps/contouring
- DEM's
- Stockpile management
- Extraction pits and dumps
- Slope inspection/slip hazards
- Dam tailings
- 3D modelling and visual inspection from all angles
- Road mapping and inspection
- Asset management



**LS telcom**

LS Multi Copter Projects and Services (Pty) Ltd

[www.LSofSA.co.za](http://www.LSofSA.co.za)